



GMT MONTHLY MEMBERSHIP PROGRESS REPORT

Results as of: 2/29/2024

Multiple District 317

LOCATION: INDIA

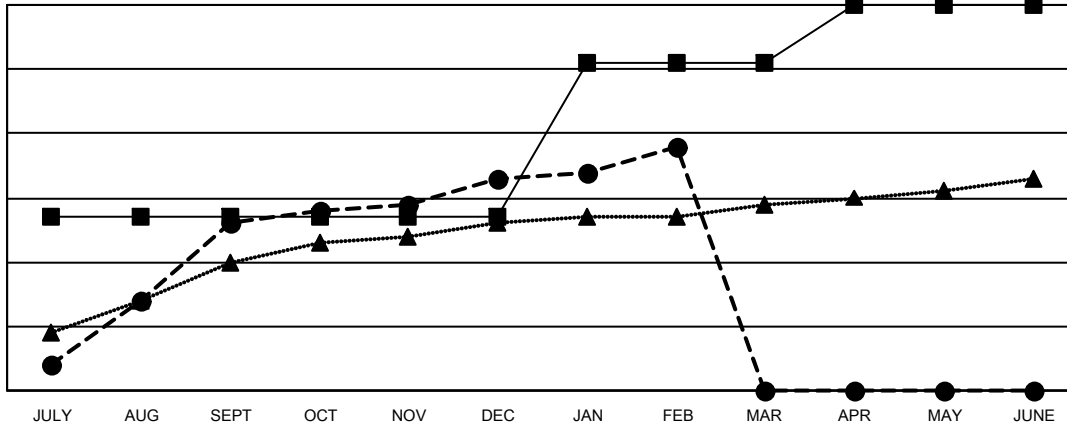
GMT: OPEN

GMT CA 6 - I

| Clubs | | | |
|-----------------------|---------------|-----------|---------------|
| RESULTS FOR 2023-2024 | | | |
| QUARTER | NEW CLUB GOAL | NEW CLUBS | DROPPED CLUBS |
| JULY/AUG/SEPT | 27 | 26 | 12 |
| OCT/NOV/DEC | 0 | 7 | 26 |
| JAN/FEB/MAR | 24 | 5 | 3 |
| APR/MAY/JUNE | 9 | 0 | 0 |

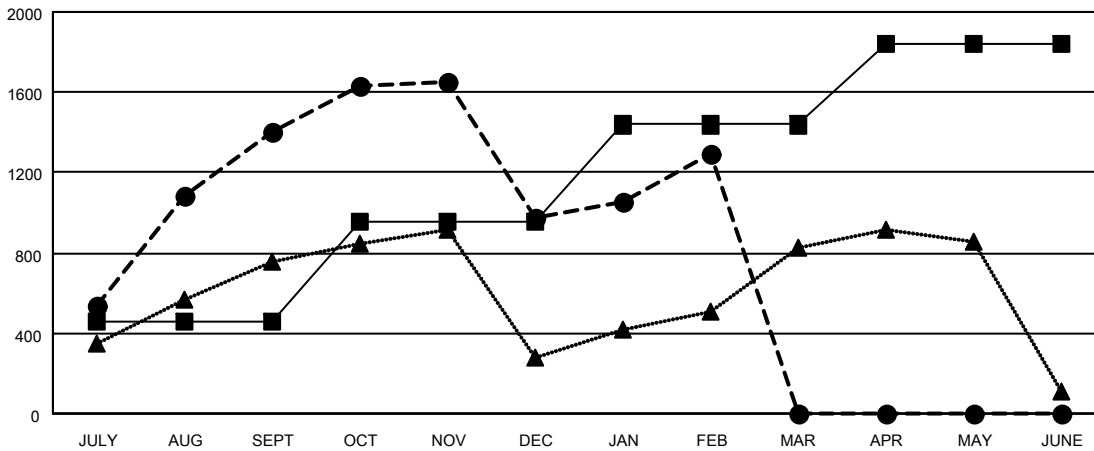
| Members | | | |
|-----------------------|------------------------|----------------------|--|
| RESULTS FOR 2023-2024 | | | |
| QUARTER | MEMBER GROWTH NET GOAL | MEMBER GROWTH ACTUAL | DROPPED MEMBERS ACTUAL (including transfers) |
| JULY/AUG/SEPT | 458 | 2,018 | 550 |
| OCT/NOV/DEC | 500 | 813 | 1,198 |
| JAN/FEB/MAR | 480 | 515 | 140 |
| APR/MAY/JUNE | 405 | 0 | 0 |

GOALS AND ACTUAL NEW CLUBS CUMULATIVE



- - CURRENT YEAR GOALS FOR NEW CLUBS
- - CURRENT YEAR ACTUAL NEW CLUBS
- ▲ - LAST YEAR ACTUAL NEW CLUBS

GOALS AND ACTUAL MEMBERS CUMULATIVE



- - MEMBER GROWTH NET GOAL
- - MEMBER GROWTH ACTUAL
- ▲ - LAST YEAR MEMBERSHIP ACTUAL

| | | |
|---|---|---|
| DROPPED CLUBS: 41 | 448 CLUBS OF 701 ADDED 1 OR MORE NEW MEMBERS | GENDER DISTRIBUTION MALE 15,964 (74.15%) FEMALE 5,565 (25.85%) |
| DROPPED MEMBERS DECEASED 53 CLUB CANCELLED 520 OTHER 1,315 TOTAL 1,888 | CLICK HERE FOR CUMULATIVE MEMBERSHIP DATA | TOTAL FAMILY UNIT MEMBERS 7,574 FAMILY MEMBERS PAYING HALF DUES 4,116 |